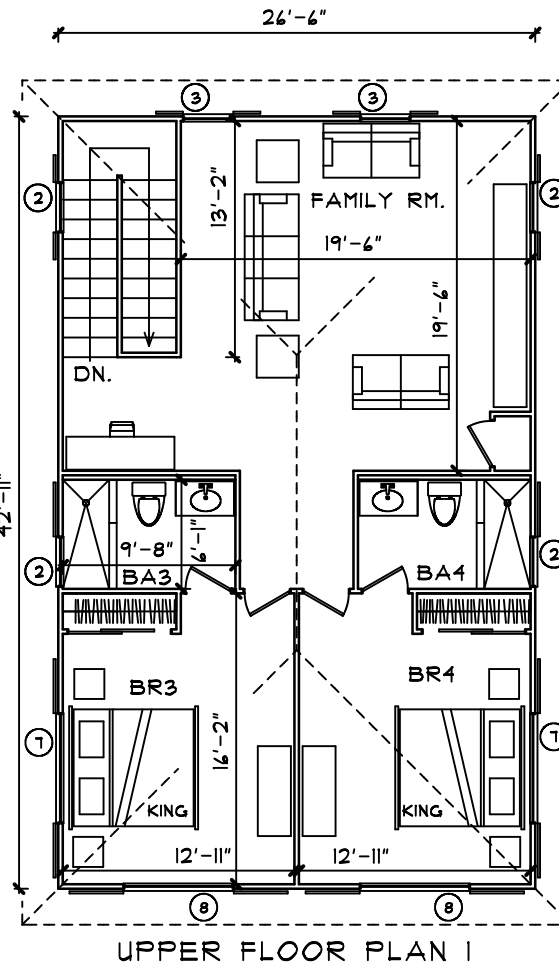
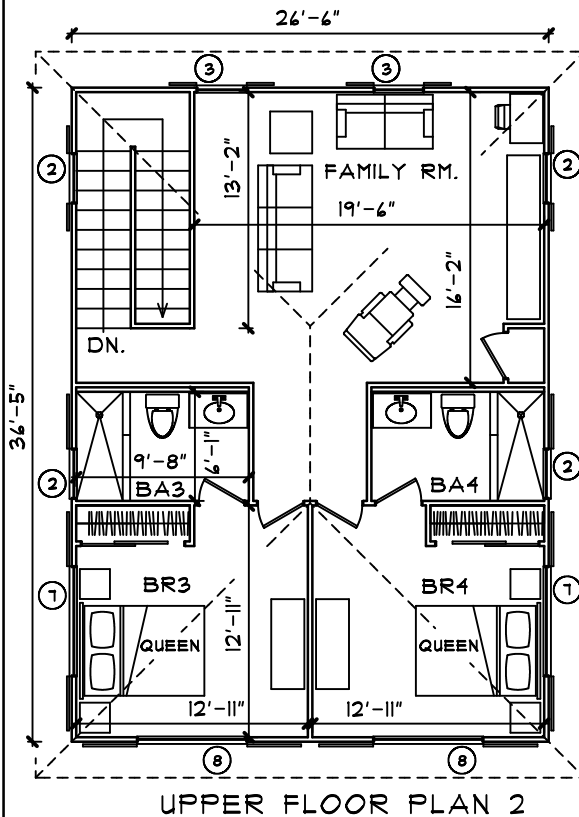
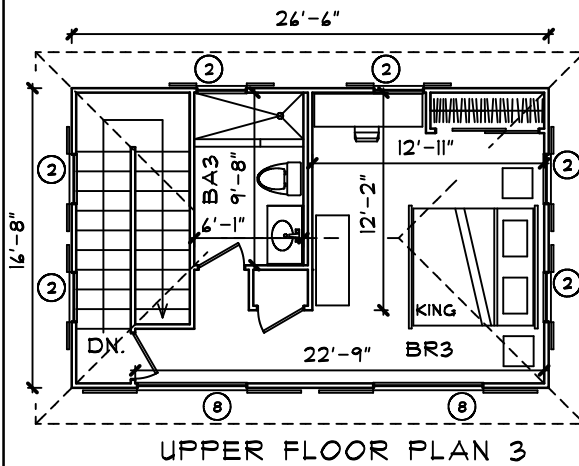


## FORCE 10 ENGINEERED BUILDING SYSTEM

- Hurricane & Earthquake Resistant
- Fire, Rot & Mildew Resistant
- Insulated Walls & Roof for Energy Efficiency
- High Quality, Low Maintenance Materials
- Custom Designed Floor Plans for any Site

## UPPER FLOOR PLANS



### Force 10 Floor System:

Pre-cut & pre-drilled galvanized steel joists and bearers bolted to galvanized steel columns which are cast into concrete footings. Fibercement-board, particle-board, plywood subfloor or hardwood planks are secured to galvanized steel framing with screws.

### Force 10 Wall Panel System:

3" thick galvanized steel and fibercement-board stress skin panels with fire-retardant polyurethane foam in wall cavity (R18). Wall panel is bolted to Force 10 floor system (or concrete floor slab) with galvanized steel hex head bolts at 39" on center.

### Force 10 Roof System:

Pre-cut & pre-drilled galvanized steel roof truss components are assembled quickly on site and secured to panels with galvanized steel bolts at 39" on center. Galvanized steel purlins and pre-painted Galvalume roof sheathing are screwed to trusses. Pre-painted Galvalume fascia and gutter, radiant barrier insulation & fibercement-board soffits are supplied to complete the roof.

## WINDOW SCHEDULE

| Symbol | Type        | Size      | Notes  | Supplier |
|--------|-------------|-----------|--------|----------|
| 2      | Double Hung | 2/8 X 3/0 | Screen | Force 10 |
| 3      | Double Hung | 2/8 X 4/0 | Screen | Force 10 |
| 7      | Double Hung | 6/0 X 3/0 | Screen | Force 10 |
| 8      | Double Hung | 6/0 X 4/0 | Screen | Force 10 |

## CALCULATIONS

### BOTH FLOORS

|                           |                  |
|---------------------------|------------------|
| Ground Floor Interiors    | 1832 Square Feet |
| Ground Floor Covered Deck | 458 Square Feet  |
| Upper Floor Plan 1        | 963 Square Feet  |
| TOTAL w/ Up. Floor Plan 1 | 3453 Square Feet |
| Upper Floor Plan 2        | 876 Square Feet  |
| TOTAL w/ Up. Floor Plan 2 | 3366 Square Feet |
| Upper Floor Plan 3        | 442 Square Feet  |
| TOTAL w/ Up. Floor Plan 3 | 2932 Square Feet |

## INNOVATIVE BUILDERS

www.force-10.com info@force-10.com  
 BOX 1257, ST. JOHN, U.S.V.I. 00831  
 TEL: 340-690-2175

PLAN: AZURE 3A  
 3 BR/3.5 BA &  
 4 BR/4.5 BA

