

Symbol	Type	Size	Notes	Supplier
1	Horz. Sliding	2/8 X 2/0	Screen	Force IO
2	Horz. Sliding	2/8 X 3/0	Screen	Force IO
3	Horz. Sliding	2/8 X 4/0	Screen	Force IO
A	Raised Panel	3/0 X 6/8	Keypad	Force IO
B	Flush Solid	2/4 X 6/8	Passage	Force IO

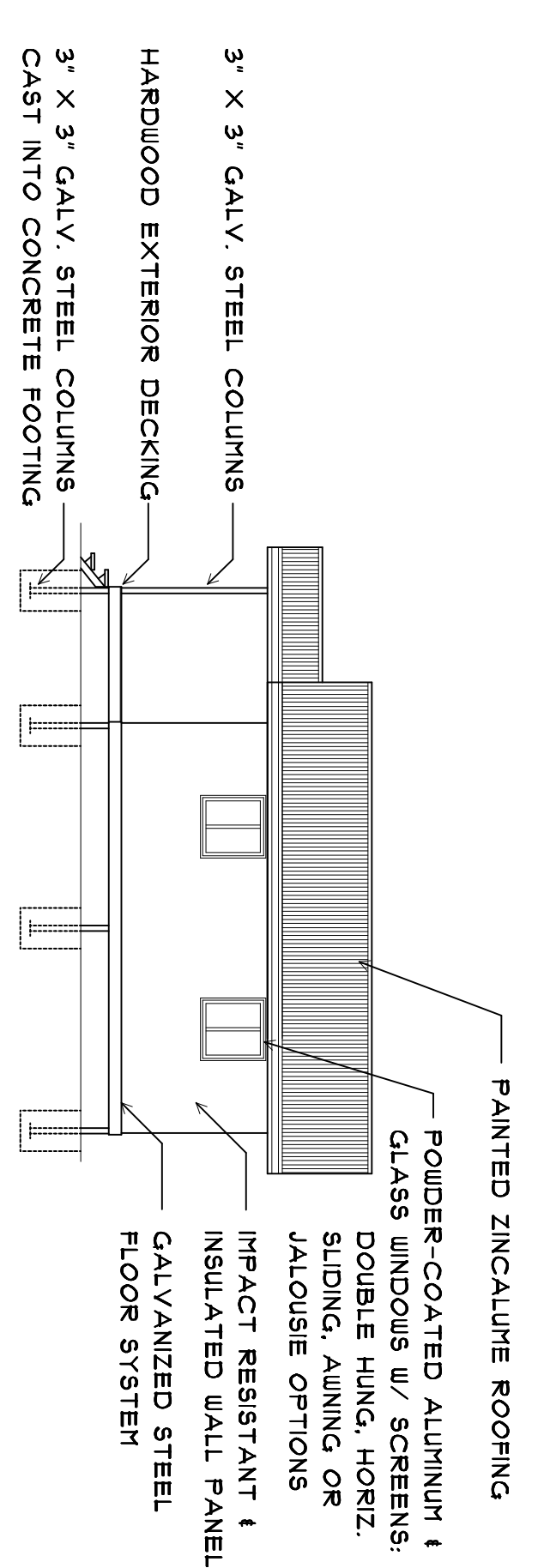
**Force IO Floor System:**  
 Pre-cut & pre-drilled galvanized steel joists and beams bolted to galvanized steel columns which are cast into concrete footings. Fiberglass-board, particle-board, plywood subfloor or hardwood planks are secured to galvanized steel framing with screws. Assembly of modular floor is very fast and secure. Floor can be raised higher above ground level in flood-prone areas.

**Force IO Wall Panel System:**  
 3" thick galvanized steel and fiberglass-board stress skin panels with fire-retardant polystyrene foam in wall cavity (R19). Steel mesh is installed inside the panel during manufacturing to strengthen exterior wall panel surfaces from flying debris. Wall panel is bolted to Force IO floor system for concrete floor slabs) with galvanized steel hex head bolts at 1000 mm on center.

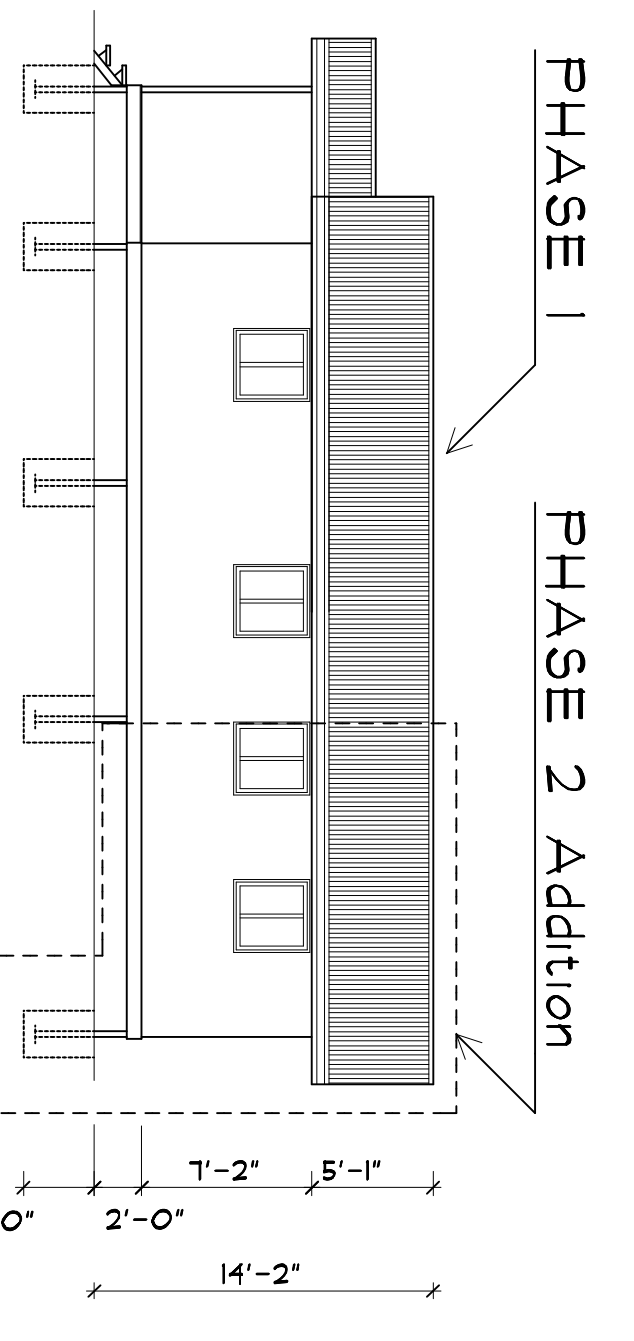
**Force IO Roof System:**  
 Pre-cut & pre-drilled galvanized steel roof truss components are assembled quickly on site and secured to panels with galvanized steel bolts at 1000 mm on center. Galvanized steel purlins and pre-painted Zincalume roof sheathing are screwed to trusses. Pre-painted Zincalume fascia and gutters, radiant barrier insulation & fiberglass-board soffits are installed to complete the roof.

**FORCE IO Engineered Building System**  
 - Hurricane & Earthquake Resistant  
 - Fire, Rot & Mildew Resistant  
 - Insulated Walls & Roof for Energy Efficiency  
 - High Quality, Low Maintenance Materials  
 - Custom Designed Floor Plans for any Site

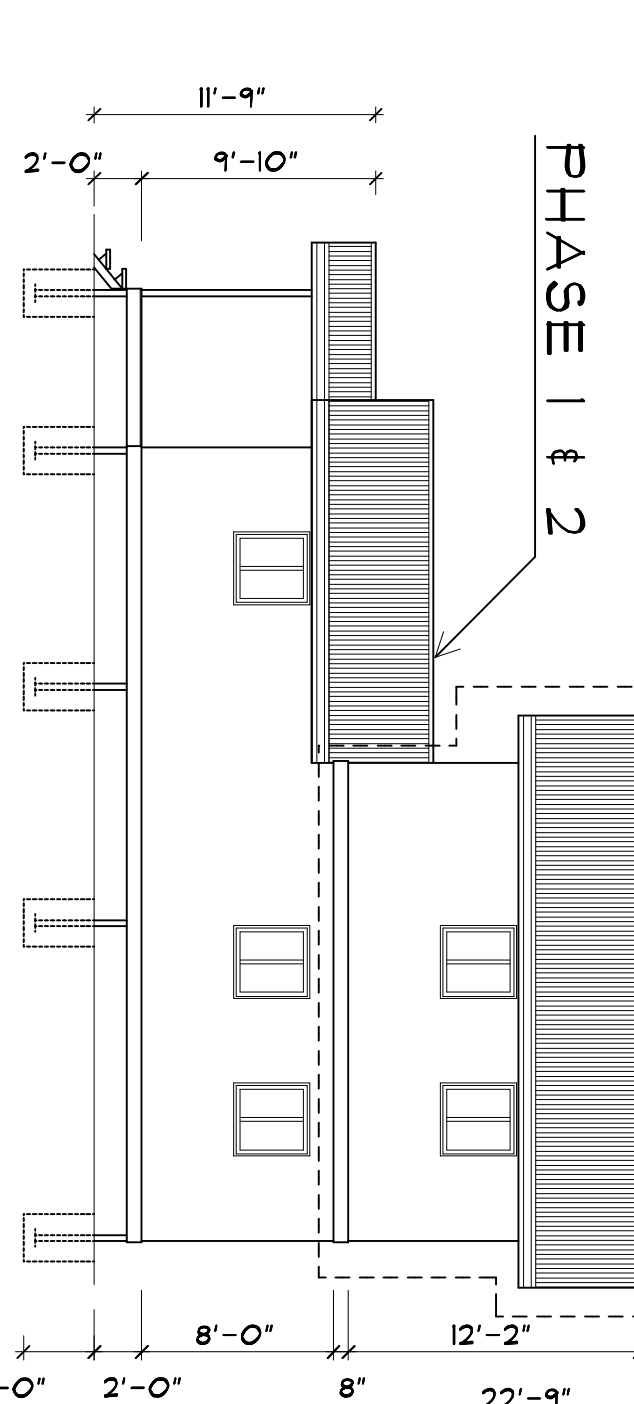
**Disaster-Resistant Starter Home**  
**Expandable: One and Two Floors**  
**AFFORDABLE HOUSING**



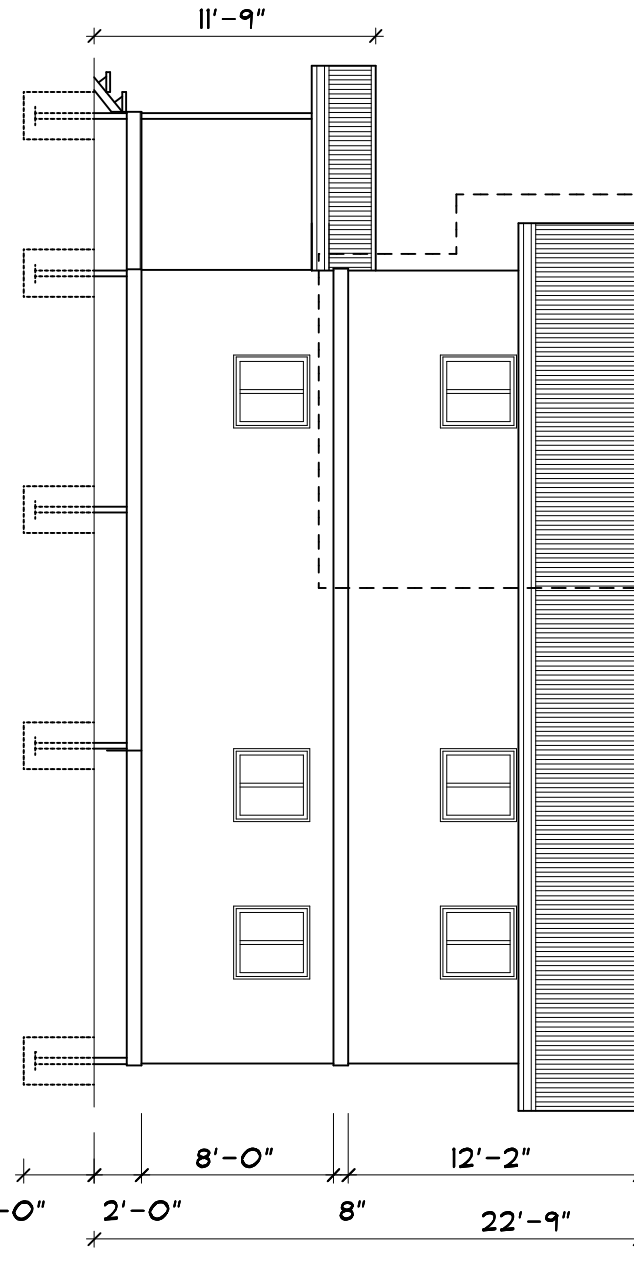
PHASE 1  
 Side Elevation



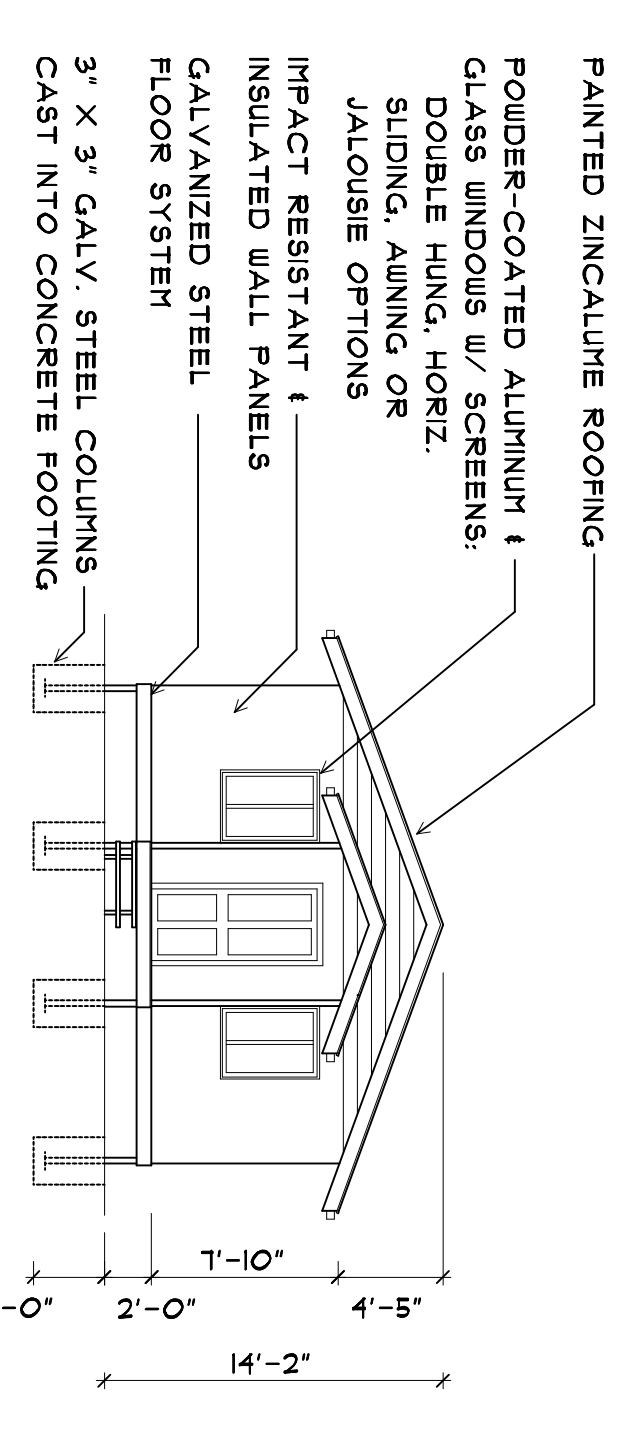
PHASE 2  
 Side Elevation



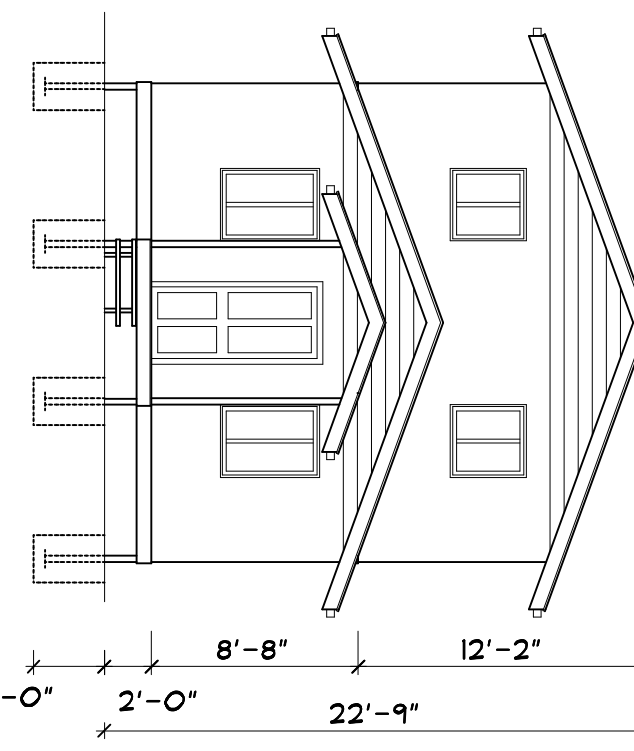
PHASE 3  
 Side Elevation



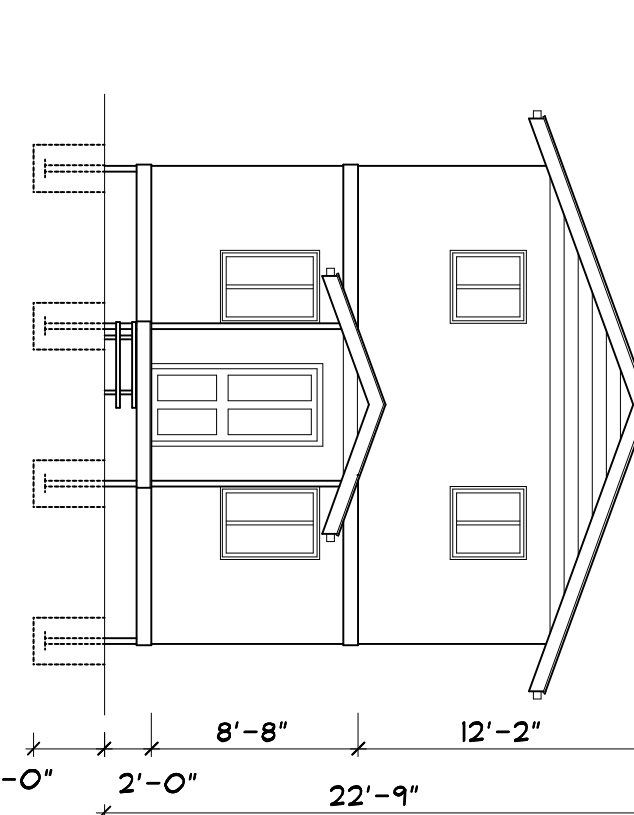
PHASE 4  
 Side Elevation



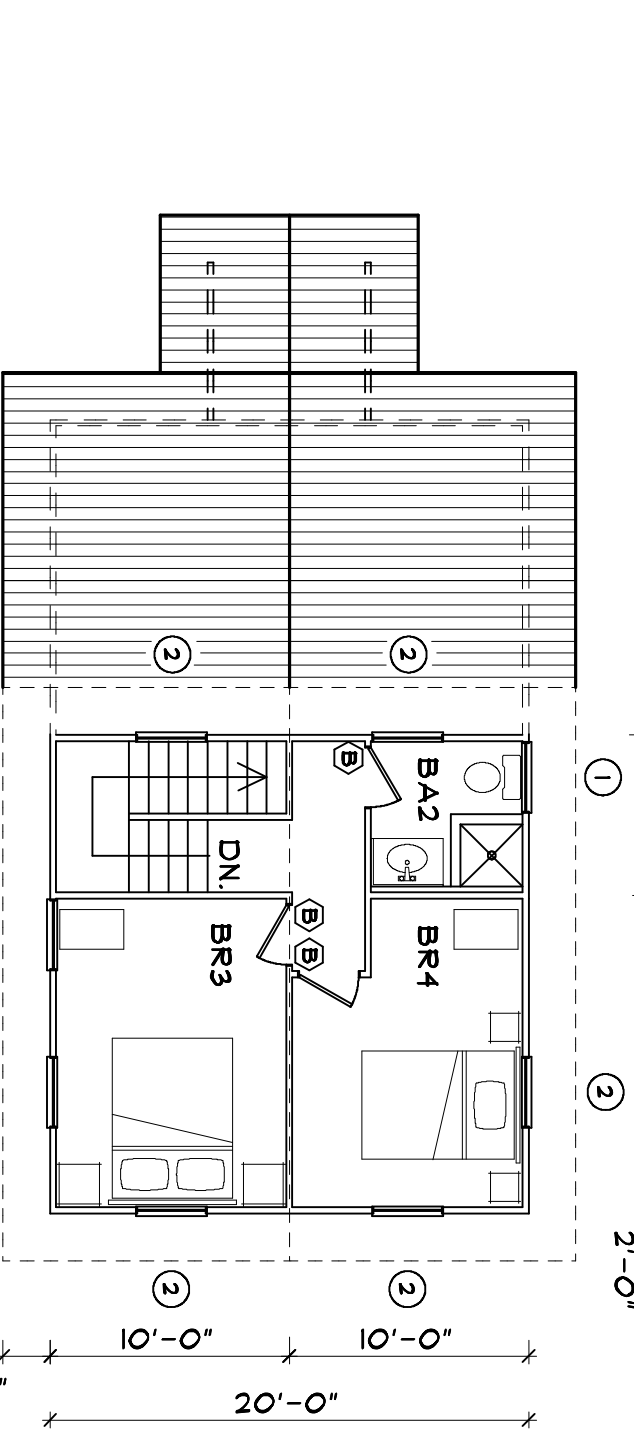
PHASE 1 & 2  
 Front Elevation



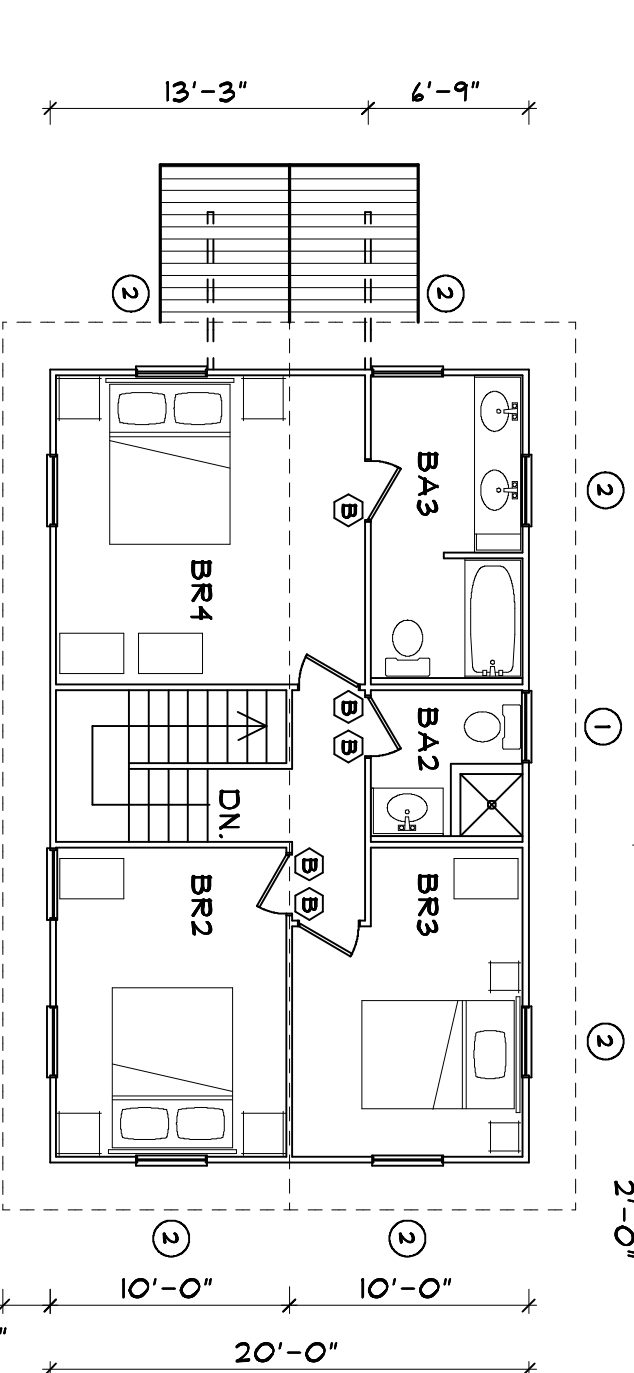
PHASE 3  
 Front Elevation



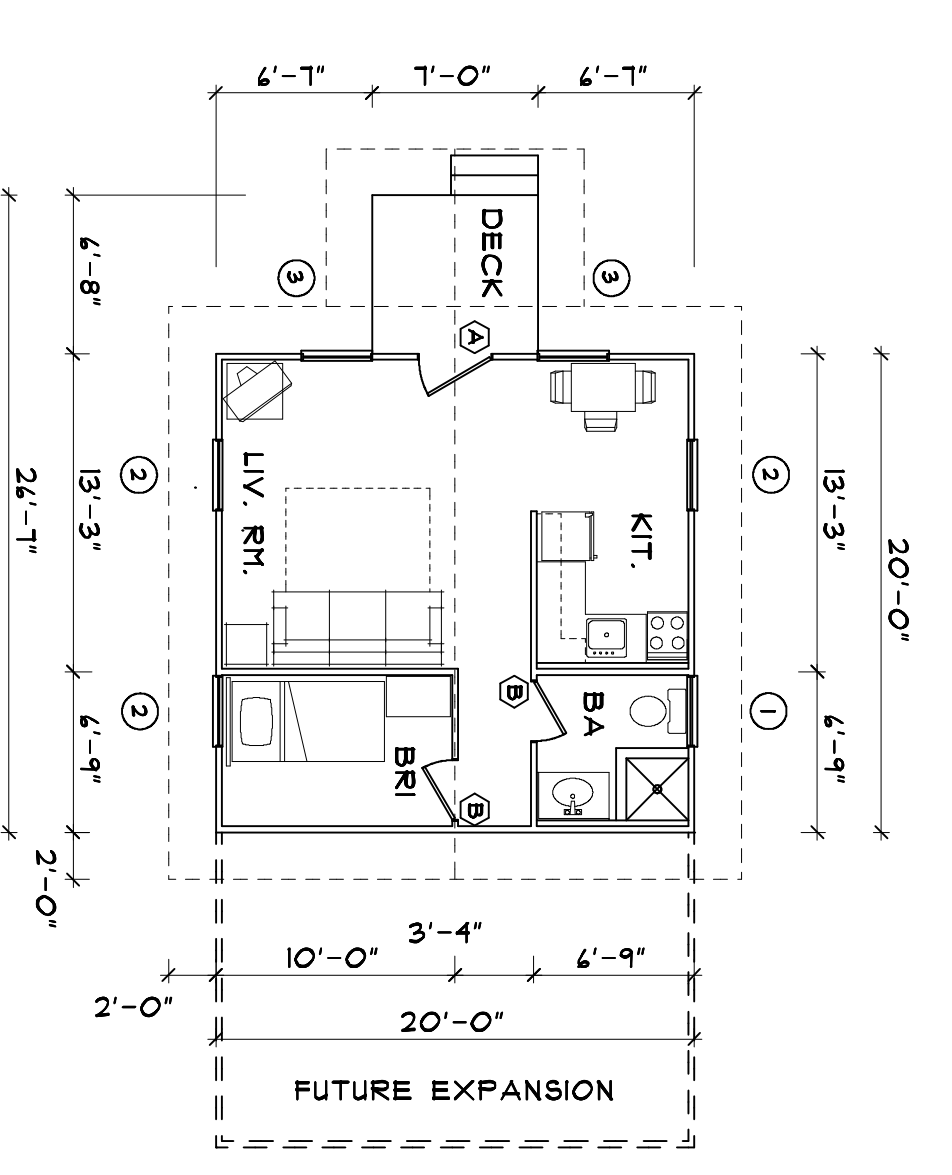
PHASE 4  
 Front Elevation



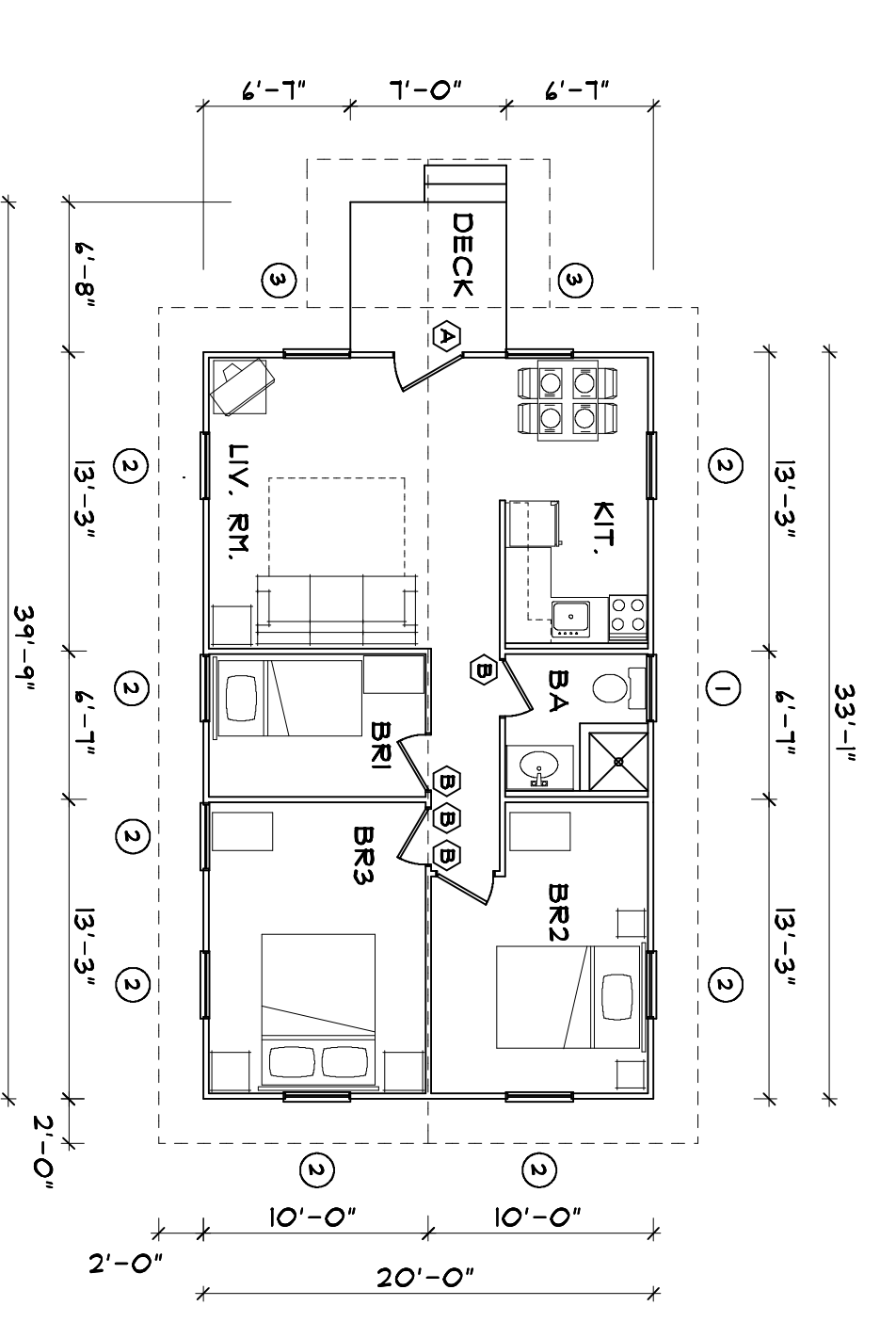
PHASE 3 - UPPER FLOOR PLAN A



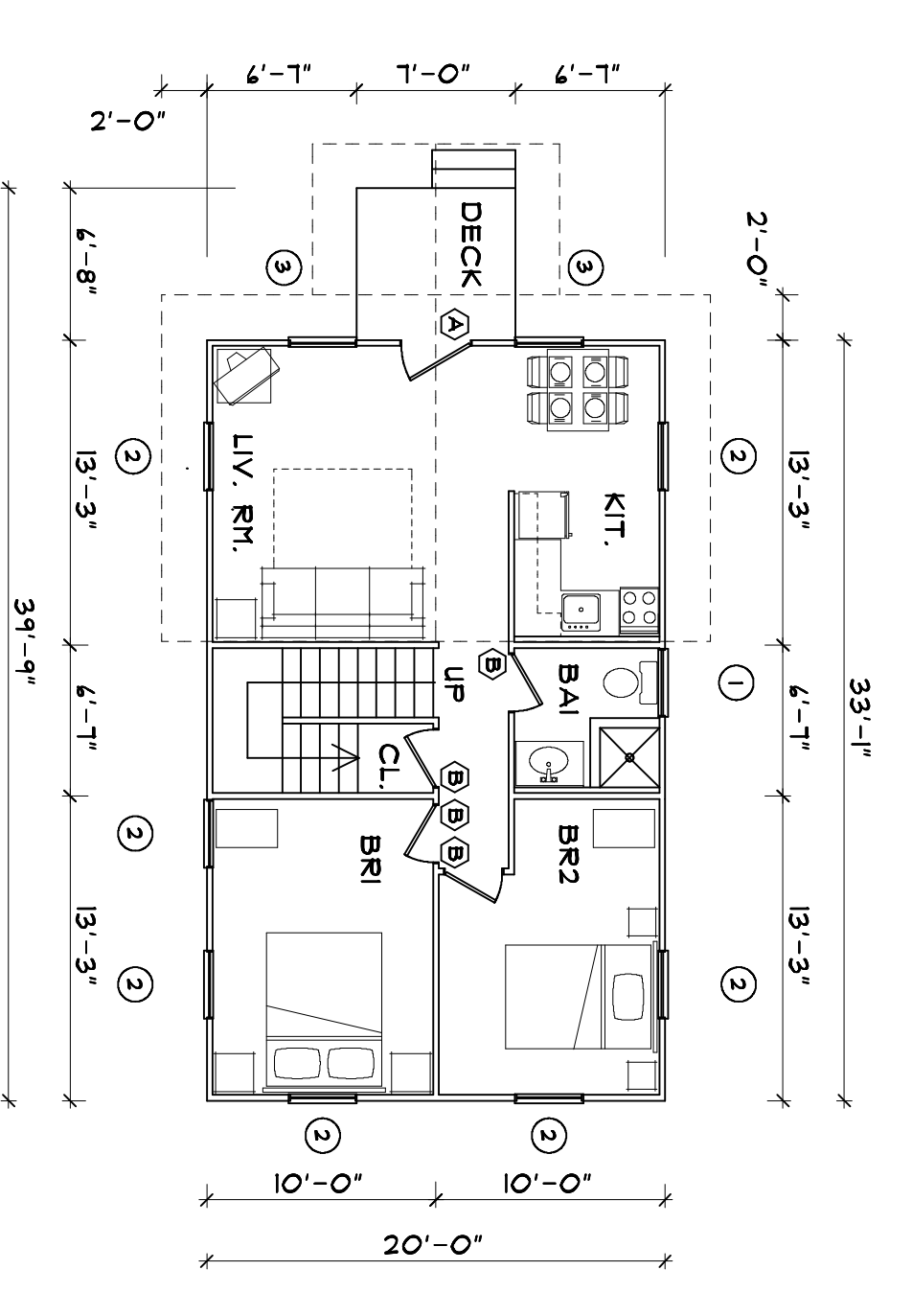
PHASE 4 - UPPER FLOOR PLAN A



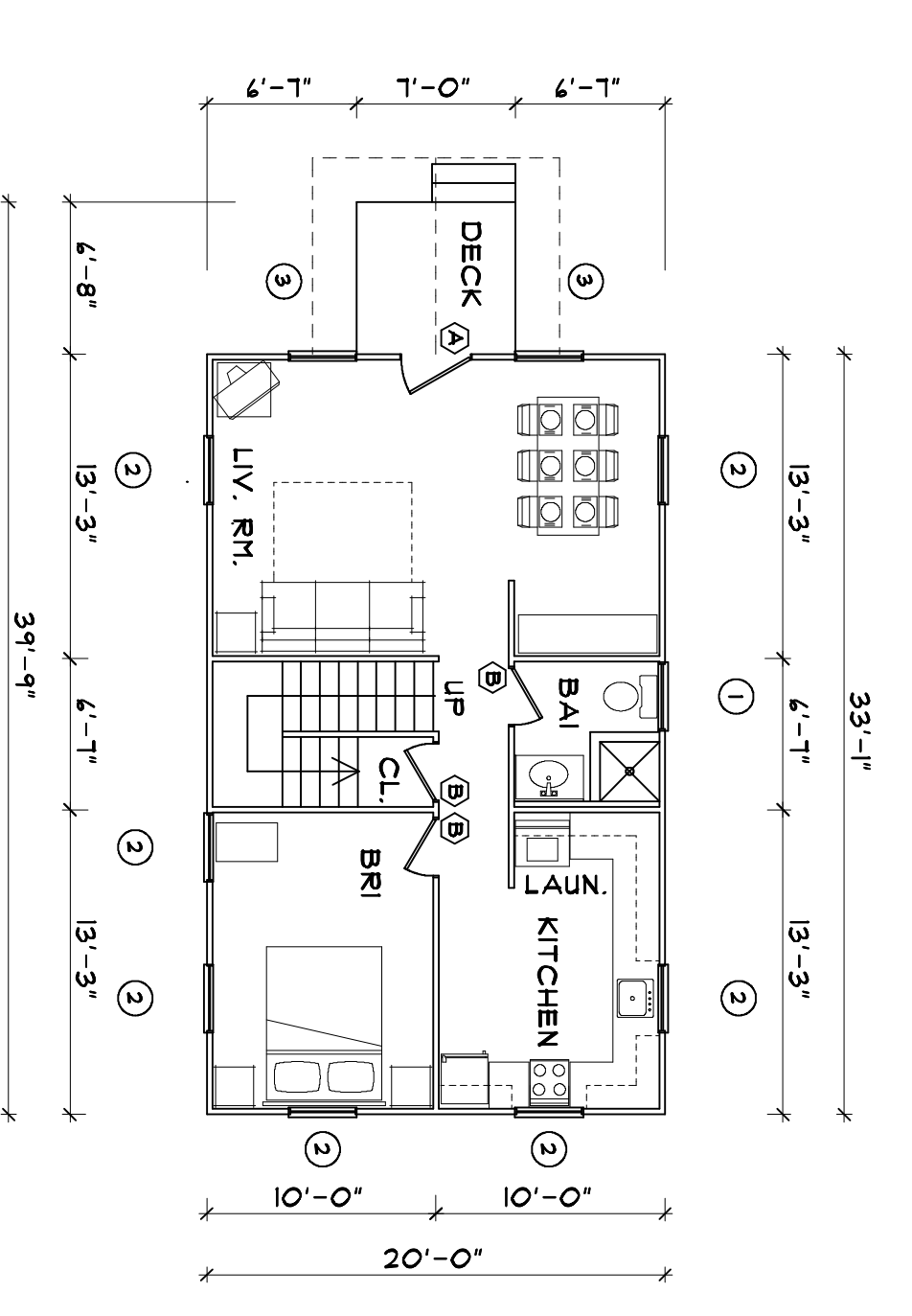
PHASE 1 - GROUND FLOOR PLAN



PHASE 2 - GROUND FLOOR PLAN



PHASE 3 - GROUND FLOOR PLAN A



PHASE 4 - GROUND FLOOR PLAN A

**INNOVATIVE BUILDERS**  
 force-io.com force-io@earthlink.net  
 BOX 30507L, ST. THOMAS, VI 00803  
 MOBILE: 340-690-2115

**CALCULATIONS: PHASE 1**

Interior: Ground Floor	36.92 m <sup>2</sup> = 398 sq. ft.
Interior: First Floor	0.00 m <sup>2</sup> = 0 sq. ft.
Covered Deck	4.26 m <sup>2</sup> = 46 sq. ft.
Outside Stairs	0.56 m <sup>2</sup> = 6 sq. ft.
<b>TOTAL</b>	<b>41.74 m<sup>2</sup> = 450 sq. ft.</b>
Roof	41.46 m <sup>2</sup> = 442 sq. ft.

**CALCULATIONS: PHASE 2**

Interior: Ground Floor	41.22 m <sup>2</sup> = 459 sq. ft.
Interior: First Floor	0.00 m <sup>2</sup> = 0 sq. ft.
Covered Deck	4.26 m <sup>2</sup> = 46 sq. ft.
Outside Stairs	0.56 m <sup>2</sup> = 6 sq. ft.
<b>TOTAL</b>	<b>46.04 m<sup>2</sup> = 491 sq. ft.</b>
Roof	90.56 m <sup>2</sup> = 975 sq. ft.

**CALCULATIONS: PHASE 3**

Interior: Ground Floor	41.22 m <sup>2</sup> = 459 sq. ft.
Interior: First Floor	36.92 m <sup>2</sup> = 398 sq. ft.
Covered Deck	4.26 m <sup>2</sup> = 46 sq. ft.
Outside Stairs	0.56 m <sup>2</sup> = 6 sq. ft.
<b>TOTAL</b>	<b>102.96 m<sup>2</sup> = 1099 sq. ft.</b>
Roof	94.93 m <sup>2</sup> = 1022 sq. ft.

**CALCULATIONS: PHASE 4**

Interior: Ground Floor	41.22 m <sup>2</sup> = 459 sq. ft.
Interior: First Floor	41.22 m <sup>2</sup> = 459 sq. ft.
Covered Deck	4.26 m <sup>2</sup> = 46 sq. ft.
Outside Stairs	0.56 m <sup>2</sup> = 6 sq. ft.
<b>TOTAL</b>	<b>127.26 m<sup>2</sup> = 1370 sq. ft.</b>
Roof	90.56 m <sup>2</sup> = 975 sq. ft.