

FORCE IO ENGINEERED BUILDING SYSTEM

- Hurricane & Earthquake Resistant
- Fire, Rot & Mildew Resistant
- Insulated Walls & Roof for Energy Efficiency
- High Quality, Low Maintenance Materials
- Custom Designed Floor Plans for any Site

Force IO Floor System:

Pre-cut & pre-drilled galvanized steel joists and bearers bolted to galvanized steel columns which are cast into concrete footings. Fibercement-board, particle-board, plywood subfloor or hardwood planks are secured to galvanized steel framing with screws.

Force IO Wall Panel System:

3" thick galvanized steel and fibercement-board stress skin panels with fire-retardant polyurethane foam in wall cavity (R18). Wall panel is bolted to Force IO floor system (or concrete floor slab) with galvanized steel hex head bolts at 39" on center.

Force IO Roof System:

Pre-cut & pre-drilled galvanized steel roof truss components are assembled quickly on site and secured to panels with galvanized steel bolts at 39" on center. Galvanized steel purlins and pre-painted Galvalume roof sheathing are screwed to trusses. Pre-painted Galvalume fascia and gutter, radiant barrier insulation & fibercement-board soffits are supplied to complete the roof.

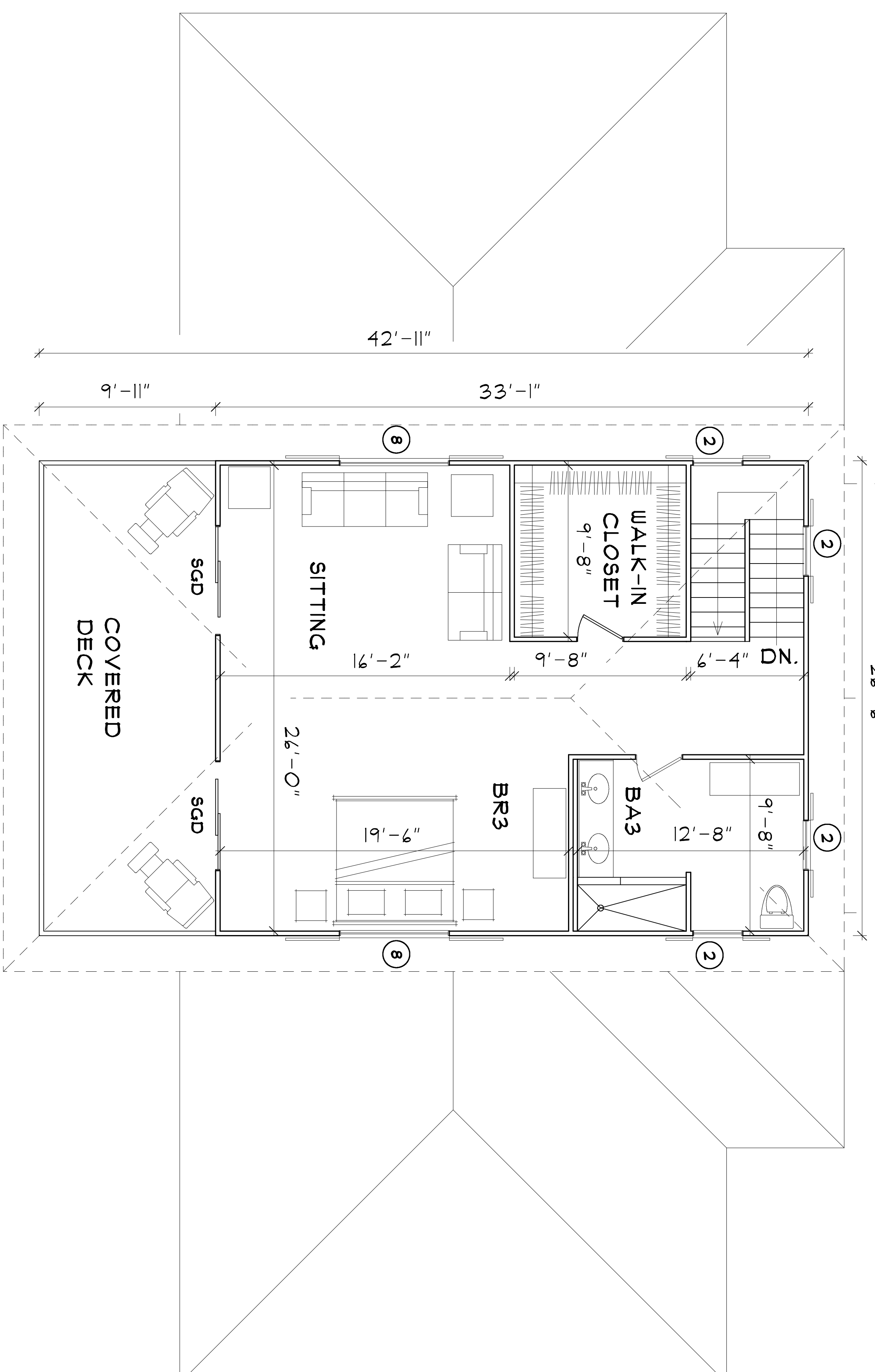
WINDOW SCHEDULE

Symbol	Type	Size	Notes	Supplier
2	Double Hung	2/8 X 3/0	Screen	Force IO
3	Double Hung	2/8 X 4/0	Screen	Force IO
1	Double Hung	6/0 X 3/0	Screen	Force IO
8	Double Hung	6/0 X 4/0	Screen	Force IO

CALCULATIONS

BOTH FLOORS

Ground Floor Interiors	1964 Square Feet
Upper Floor Interiors	876 Square Feet
Ground Floor Covered Deck	524 Square Feet
Upper Floor Covered Deck	264 Square Feet
Entry Deck	199 Square Feet
TOTAL	3821 Square Feet

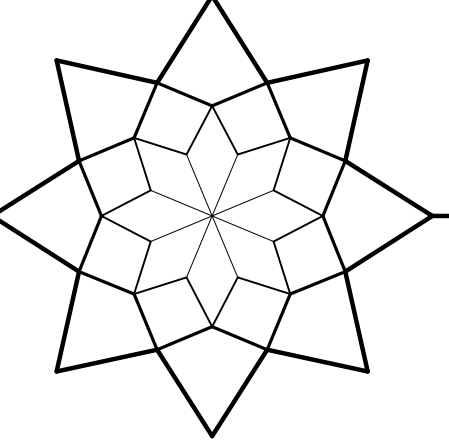


UPPER FLOOR PLAN

INNOVATIVE BUILDERS

www.force-io.com info@force-io.com
 BOX 305011, ST. THOMAS, VI 00803
 TEL: 340-690-2175 force-io@earthlink.net

PLAN: MANDALAY HOUSE



Roof 3584 Square Feet