

FORCE 10 Engineered Building System

- Hurricane & Earthquake Resistant
- Fire, Rot & Mildew Resistant
- Insulated Walls & Roof for Energy Efficiency
- High Quality, Low Maintenance Materials
- Custom Designed Floor Plans for any Site

Force 10 Floor System:

Pre-cut & pre-drilled galvanized steel joists and bearers bolted to galvanized steel columns which are cast into concrete footings. Fibercement-board, particle-board, plywood subfloor or hardwood planks are secured to galvanized steel framing with screws.

Force 10 Wall Panel System:

3" thick galvanized steel and fibercement-board stress skin panels with fire-retardant polyurethane foam in wall cavity (R18). Wall panel is bolted to Force 10 floor system (or concrete floor slab) with galvanized steel hex head bolts at 39" on center.

Force 10 Roof System:

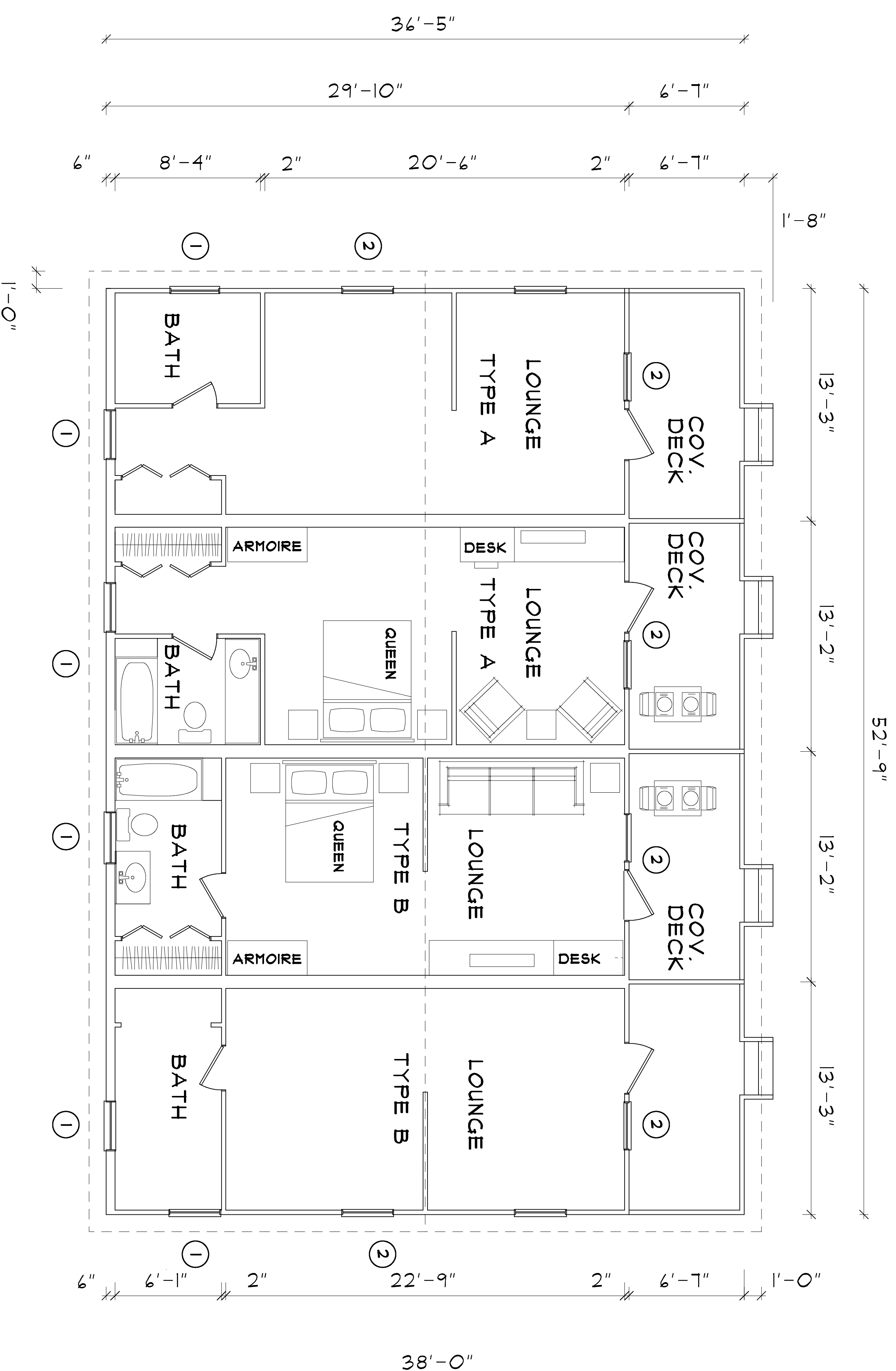
Pre-cut & pre-drilled galvanized steel roof truss components are assembled quickly on site and secured to panels with galvanized steel bolts at 39" on center. Galvanized steel purlins and pre-painted Galvalume roof sheathing are screwed to trusses. Pre-painted Galvalume fascia and gutter, radiant barrier insulation & fibercement-board soffits are supplied to complete the roof.

WINDOWS

Symbol	Type	Size	Notes	Supplier
1	Sliding	2/8 X 2/0	Screen	Force 10
2	Sliding	2/8 X 3/0	Screen	Force 10

CALCULATIONS

Interiors	145.91 m2 = 1571 sq. ft.
Covered Decks & Stairs	36.93 m2 = 398 sq. ft.
TOTAL	182.84 m2 = 1968 sq. ft.
Roof	194.71 m2 = 2096 sq. ft.



GROUND FLOOR PLAN

INNOVATIVE BUILDERS

www.force-10.com force-10@earthlink.net
 BOX 305011, ST. THOMAS, VI 00803
 MOBILE: 340-690-2175

PLAN: 1968 - A: 4BR - 4BA

