

FORCE 10 Engineered Building System

- Hurricane & Earthquake Resistant
- Fire, Rot & Mildew Resistant
- Insulated Walls & Roof for Energy Efficiency
- High Quality, Low Maintenance Materials
- Custom Designed Floor Plans for any Site

Force 10 Floor System:

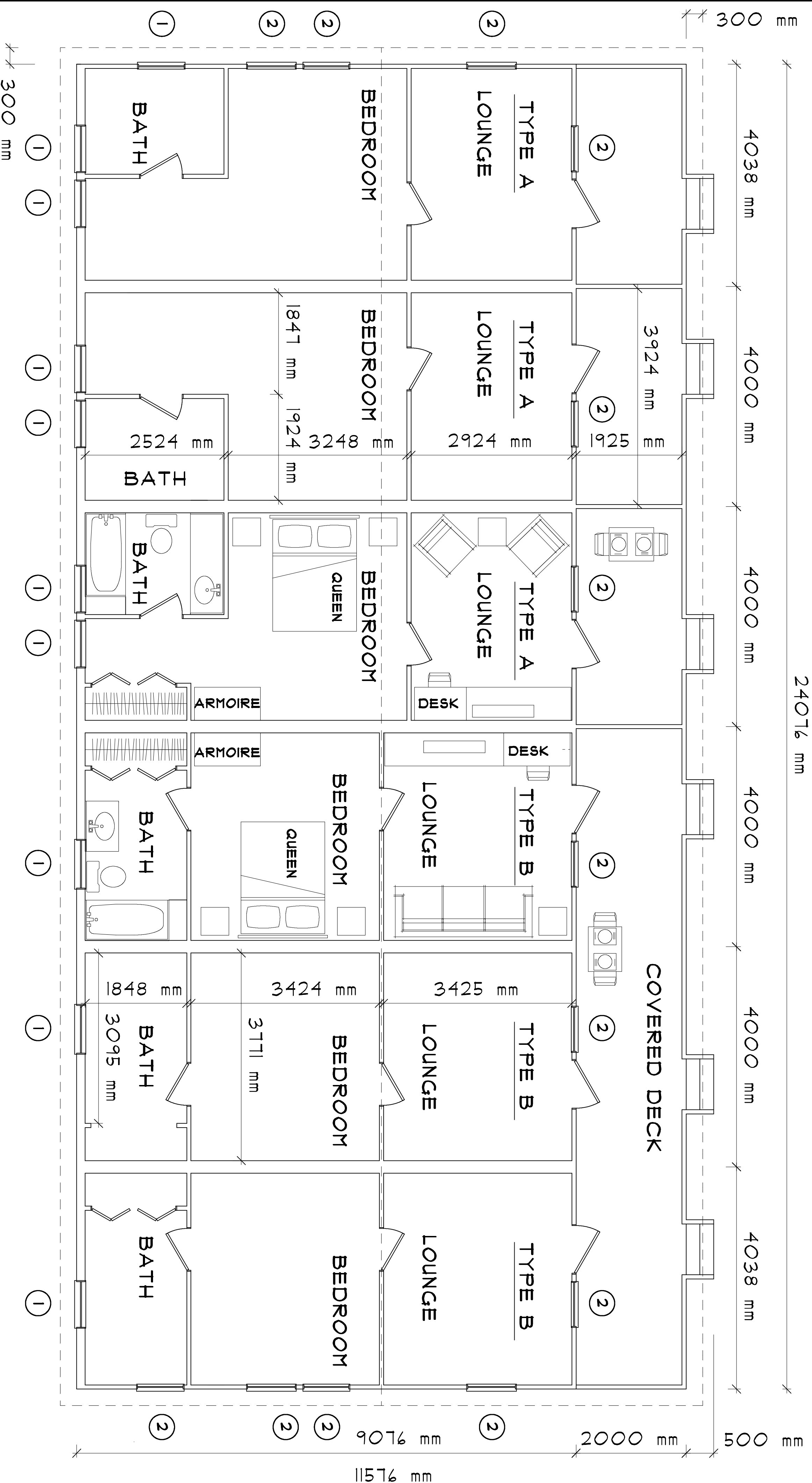
Pre-cut & pre-drilled galvanized steel joists and bearers bolted to galvanized steel columns which are cast into concrete footings. Fibercement-board, particle-board, plywood subfloor or hardwood planks are secured to galvanized steel framing with screws.

Force 10 Wall Panel System:

3" thick galvanized steel and fibercement-board stress skin panels with fire-retardant polyurethane foam in wall cavity (R18). Wall panel is bolted to Force 10 floor system (or concrete floor slab) with galvanized steel hex head bolts at 39" on center.

Force 10 Roof System:

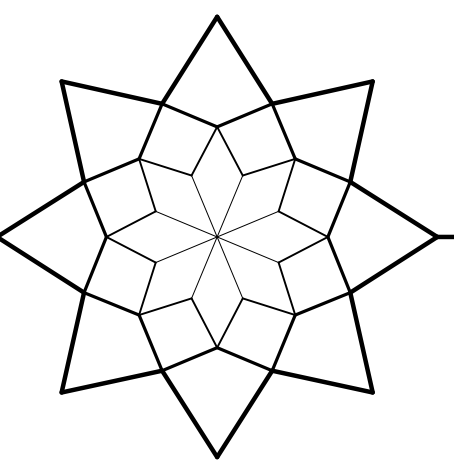
Pre-cut & pre-drilled galvanized steel roof truss components are assembled quickly on site and secured to panels with galvanized steel bolts at 39" on center. Galvanized steel purlins and pre-painted Galvalume roof sheathing are screwed to trusses. Pre-painted Galvalume fascia and gutter, radiant barrier insulation & fibercement-board soffits are supplied to complete the roof.



GROUND FLOOR PLAN

INNOVATIVE BUILDERS

www.force-10.com info@force-10.com
 BOX 305011, ST. THOMAS, VI 00803
 TEL: 340-690-2175 force-10@earthlink.net



PLAN: 2906 - A: 6BR - 6BA

Medium / Long Term Units
 UN/WFP HAITI STAFF HOUSING

WINDOWS

Symbol	Type	Size	Notes	Supplier
1	Sliding	828 x 905	Screen	Force 10
2	Sliding	866 x 905	Screen	Force 10

CALCULATIONS

Interiors	2353 sq. ft. = 219 m ²
Covered Decks & Stairs	553 sq. ft. = 51 m ²
TOTAL	2906 sq. ft. = 270 m²
Roof	3102 sq. ft. = 288 m ²