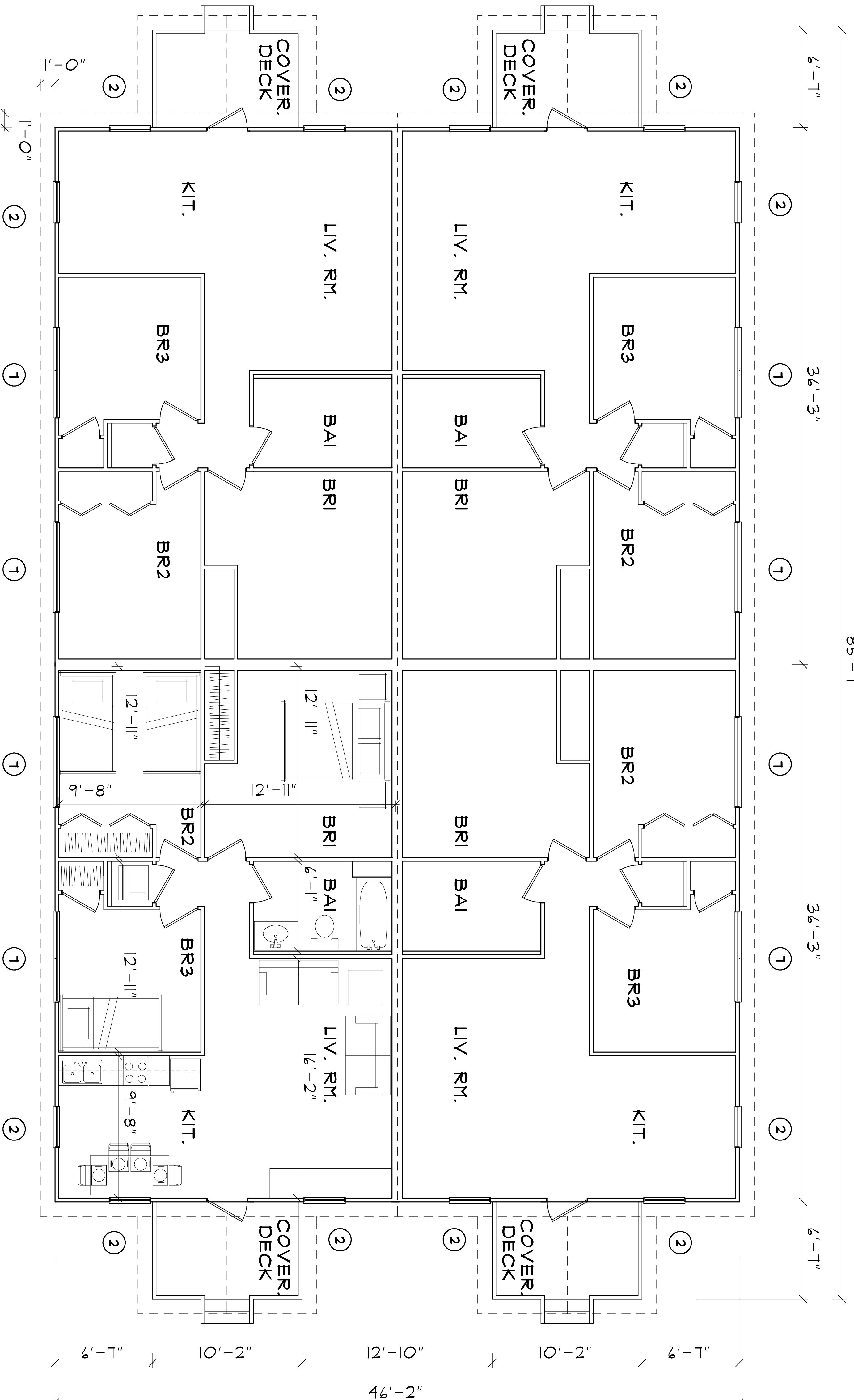


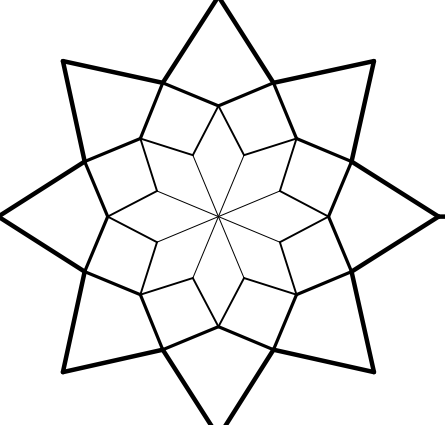
85'-1"



## GROUND FLOOR PLAN

### INNOVATIVE BUILDERS

www.force-10.com force-10@earthlink.net  
 BOX 305011, ST. THOMAS, VI 00803  
 MOBILE: 340-690-2175



#### FORCE 10 Engineered Building System

- Hurricane & Earthquake Resistant
- Fire, Rot & Mildew Resistant
- Insulated Walls & Roof for Energy Efficiency
- High Quality, Low Maintenance Materials
- Custom Designed Floor Plans for any Site

#### Force 10 Floor System:

Pre-cut & pre-drilled galvanized steel joists and bearers bolted to galvanized steel columns which are cast into concrete footings. Fibercement-board, particle-board, plywood subfloor or hardwood planks are secured to galvanized steel framing with screws.

#### Force 10 Wall Panel System:

3" thick galvanized steel and fibercement-board stress skin panels with fire-retardant polyurethane foam in wall cavity (R18). Wall panel is bolted to Force 10 floor system (or concrete floor slabs) with galvanized steel hex head bolts at 39" on center.

#### Force 10 Roof System:

Pre-cut & pre-drilled galvanized steel roof truss components are assembled quickly on site and secured to panels with galvanized steel bolts at 39" on center. Galvanized steel purlins and pre-painted Galvalume roof sheathing are screwed to trusses. Pre-painted Galvalume fascia and gutter, radiant barrier insulation & fibercement-board soffits are supplied to complete the roof.

#### WINDOW SCHEDULE

Symbol	Type	Size	Notes	Supplier
1	Horiz Sliding	2/8 X 2/0	Screen	Force 10
2	Horiz Sliding	2/8 X 3/0	Screen	Force 10
3	Horiz Sliding	2/8 X 4/0	Screen	Force 10
1	Horiz Sliding	6/0 X 3/0	Screen	Force 10

#### CALCULATIONS

##### FLOORS

Ground Floor Interiors	310.75 m <sup>2</sup> = 3345 sq. ft.
Entry Deck & Stairs	29.23 m <sup>2</sup> = 315 sq. ft.
TOTAL	339.97 m <sup>2</sup> = 3660 sq. ft.

Roof 366.62 m<sup>2</sup> = 3946 sq. ft.

## PLAN: 3660-A: (4) X 3BR - 1BA