

**FORCE IO Engineered Building System**

- Hurricane & Earthquake Resistant
- Fire, Rot & Mildew Resistant
- Insulated Walls & Roof for Energy Efficiency
- High Quality, Low Maintenance Materials
- Custom Designed Floor Plans for any Site

**Force IO Floor System:**

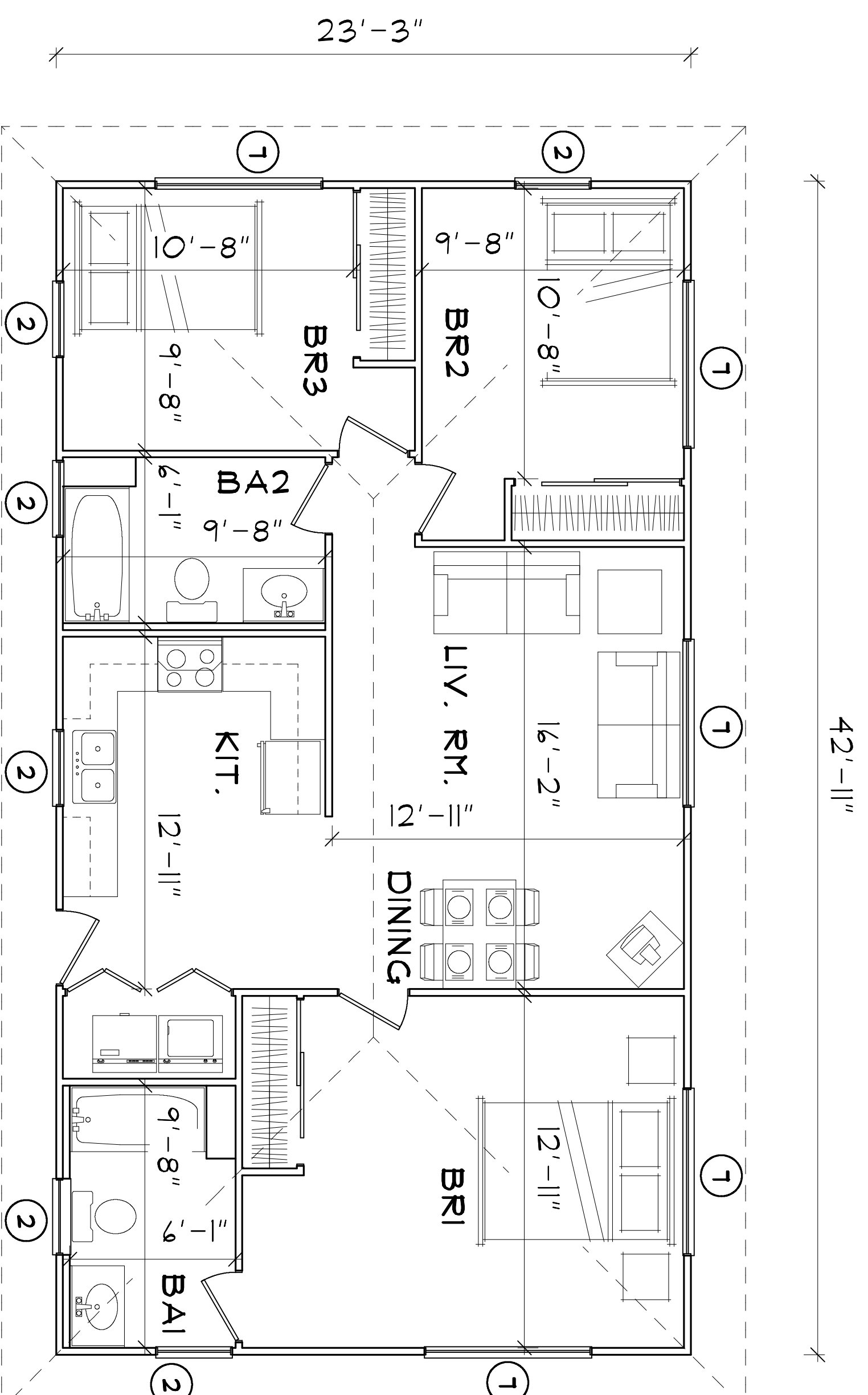
Pre-cut & pre-drilled galvanized steel joists and bearers bolted to galvanized steel columns which are cast into concrete footings. Fibercement-board, particle-board, plywood subfloor or hardwood planks are secured to galvanized steel framing with screws.

**Force IO Wall Panel System:**

3" thick galvanized steel and fibercement-board stress skin panels with fire-retardant polyurethane foam in wall cavity (R18). Wall panel is bolted to Force IO floor system (or concrete floor slab) with galvanized steel hex head bolts at 39" on center.

**Force IO Roof System:**

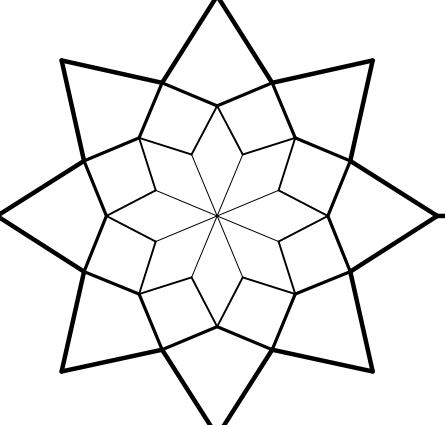
Pre-cut & pre-drilled galvanized steel roof truss components are assembled quickly on site and secured to panels with galvanized steel bolts at 39" on center. Galvanized steel purlins and pre-painted Galvalume roof sheathing are screwed to trusses. Pre-painted Galvalume fascia and gutter, radiant barrier insulation & fibercement-board soffits are supplied to complete the roof.



**GROUND FLOOR PLAN**

**INNOVATIVE BUILDERS**

www.force-io.com info@force-io.com  
 BOX 305011, ST. THOMAS, VI 00803  
 TEL: 340-690-2175 force-io@earthlink.net



**PLAN: 996-A 3BR - 2BA**

**WINDOW SCHEDULE**

Symbol	Type	Size	Notes	Supplier
2	Double Hung	2/8 X 3/0	Screen	Force IO
3	Double Hung	2/8 X 4/0	Screen	Force IO
1	Double Hung	6/0 X 3/0	Screen	Force IO
8	Double Hung	6/0 X 4/0	Screen	Force IO

**CALCULATIONS**

FLOORS	Ground Floor Interiors	996 Square Feet
Roof		1212 Square Feet