

## FORCE 10 ENGINEERED BUILDING SYSTEM

- Hurricane & Earthquake Resistant
- Fire, Rot & Mildew Resistant
- Insulated Walls & Roof for Energy Efficiency
- High Quality, Low Maintenance Materials
- Custom Designed Floor Plans for any Site

### Force 10 Floor System:

Pre-cut & pre-drilled galvanized steel joists and bearers bolted to galvanized steel columns which are cast into concrete footings. Fibercement-board, particle-board, plywood subfloor or hardwood planks are secured to galvanized steel framing with screws.

### Force 10 Wall Panel System:

3" thick galvanized steel and fibercement-board stress skin panels with fire-retardant polyurethane foam in wall cavity (R18). Wall panel is bolted to Force 10 floor system (or concrete floor slab) with galvanized steel hex head bolts at 39" on center.

### Force 10 Roof System:

Pre-cut & pre-drilled galvanized steel roof truss components are assembled quickly on site and secured to panels with galvanized steel bolts at 39" on center. Galvanized steel purlins and pre-painted Galvalume roof sheathing are screwed to trusses. Pre-painted Galvalume fascia and gutter, radiant barrier insulation & fibercement-board soffits are supplied to complete the roof.

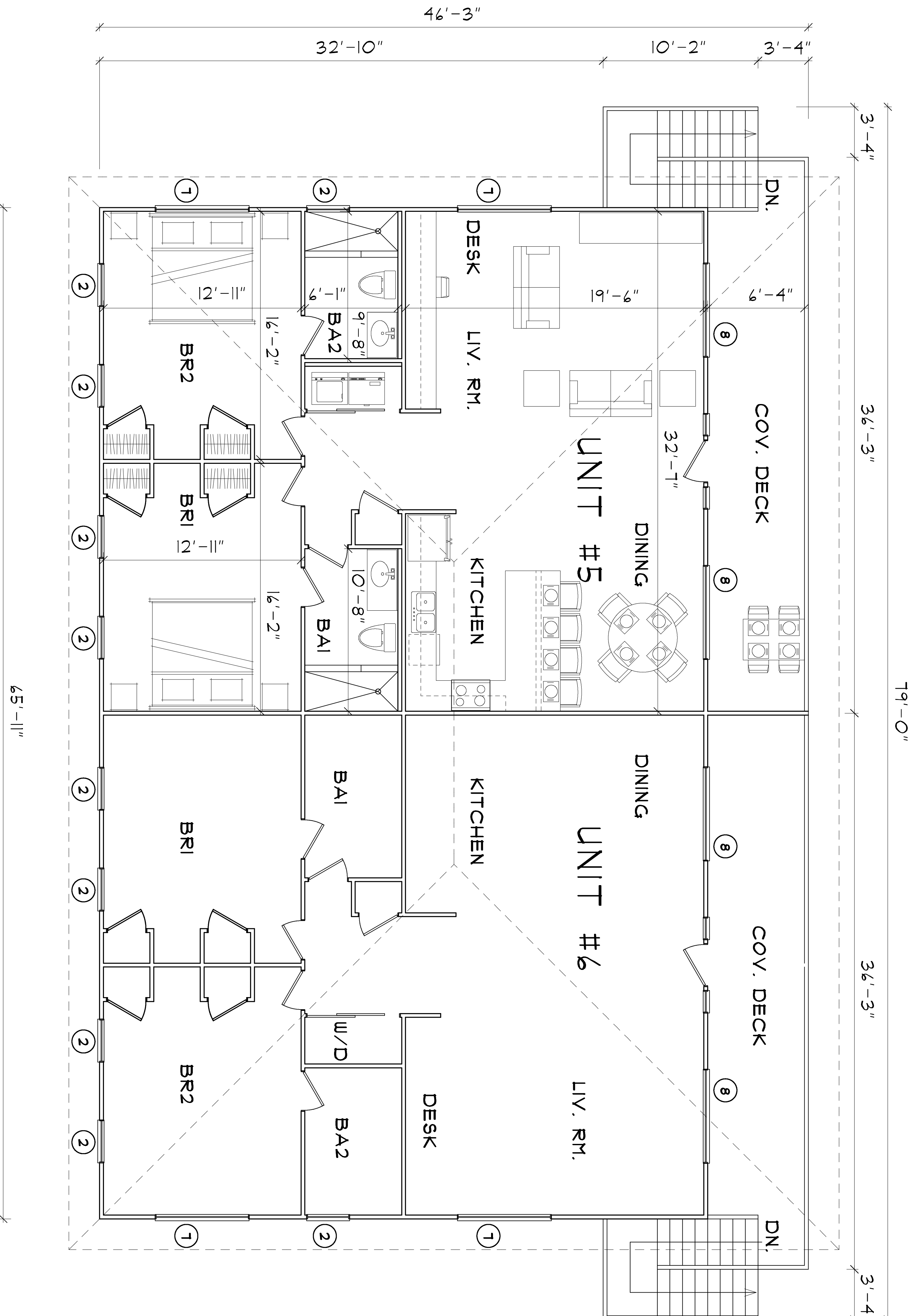
## WINDOW SCHEDULE

Symbol	Type	Size	Notes	Supplier
2	Double Hung	2/8 X 3/0	Screen	Force 10
3	Double Hung	2/8 X 4/0	Screen	Force 10
1	Double Hung	6/0 X 3/0	Screen	Force 10
8	Double Hung	6/0 X 4/0	Screen	Force 10

## CALCULATIONS

### BOTH FLOORS

Interiors	5219 Square Feet
Covered Decks	814 Square Feet
Stairs	231 Square Feet
<b>TOTAL</b>	<b>6324 Square Feet</b>

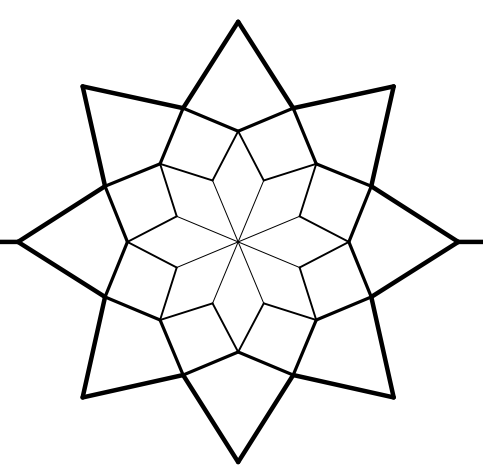


## UPPER FLOOR PLAN

## INNOVATIVE BUILDERS

www.force-10.com info@force-10.com  
 BOX 305011, ST. THOMAS, VI 00803  
 TEL: 340-690-2175 force-10@earthlink.net

## PLAN: SEAVIEW APARTMENTS-1



Roof 3506 Square Feet