

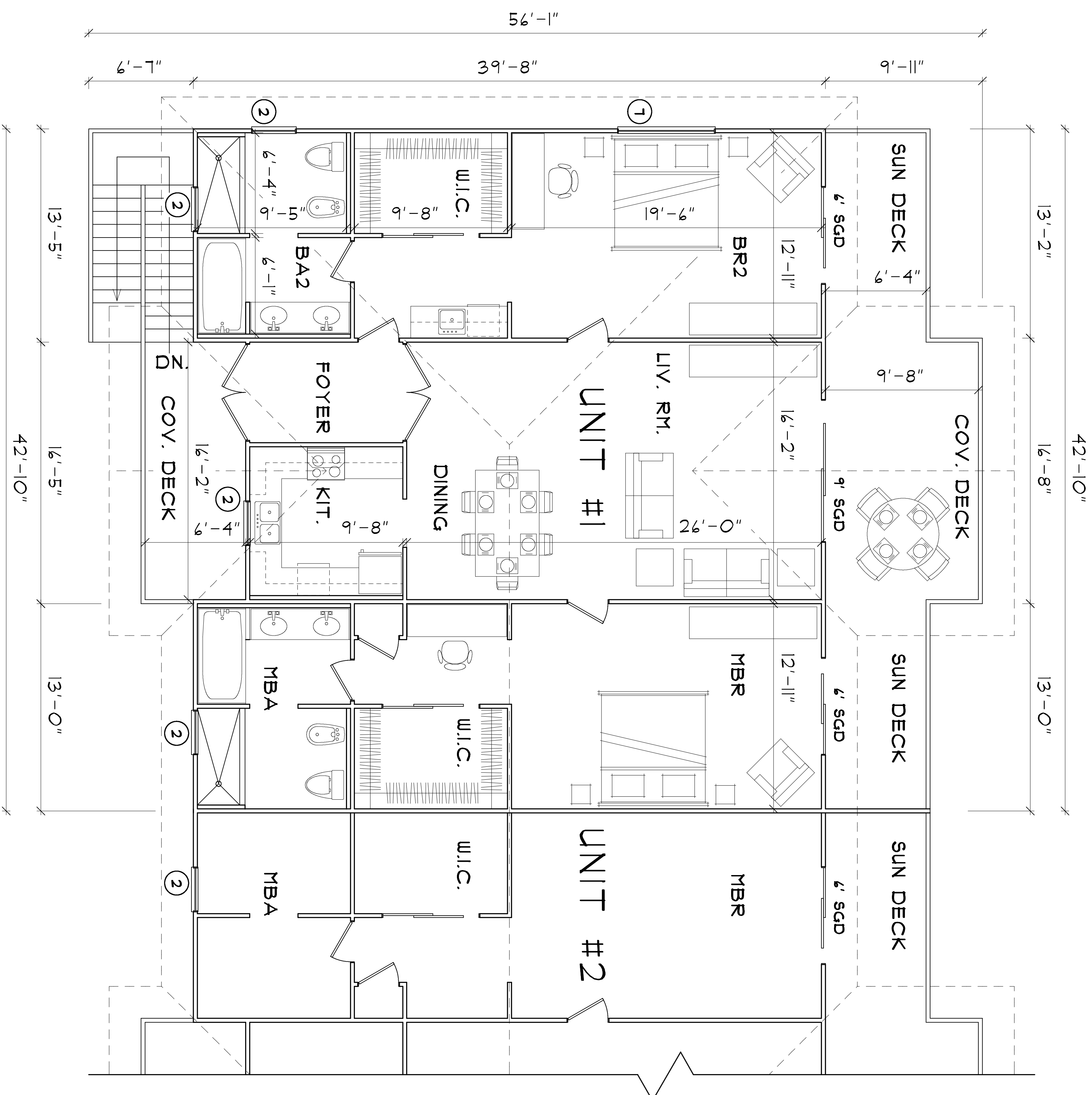
INNOVATIVE BUILDERS

www.force-10.com info@force-10.com

BOX 305071, ST. THOMAS, VI 00803

TEL: 340-690-2175 force-10@earthlink.net

PLAN: VACATION SUITES-A



UPPER FLOOR PLAN

FORCE 10 ENGINEERED BUILDING SYSTEM

- Hurricane & Earthquake Resistant
- Fire, Rot & Mildew Resistant
- Insulated Walls & Roof for Energy Efficiency
- High Quality, Low Maintenance Materials
- Custom Designed Floor Plans for any Site

Force 10 Floor System:

Pre-cut & pre-drilled galvanized steel joists and bearers bolted to galvanized steel columns which are cast into concrete footings. Fibercement-board, particle-board, plywood subfloor or hardwood planks are secured to galvanized steel framing with screws.

Force 10 Wall Panel System:

3" thick galvanized steel and fibercement-board stress skin panels with fire-retardant polyurethane foam in wall cavity (R18). Wall panel is bolted to Force 10 floor system (or concrete floor slab) with galvanized steel hex head bolts at 39" on center.

Force 10 Roof System:

Pre-cut & pre-drilled galvanized steel roof truss components are assembled quickly on site and secured to panels with galvanized steel bolts at 39" on center. Galvanized steel purlins and pre-painted Galvalume roof sheathing are screwed to trusses. Pre-painted Galvalume fascia and gutter, radiant barrier insulation & fibercement-board soffits are supplied to complete the roof.

WINDOW SCHEDULE

Symbol	Type	Size	Notes	Supplier
2	Double Hung	2/8 X 3/0	Screen	Force 10
3	Double Hung	2/8 X 4/0	Screen	Force 10
1	Double Hung	6/0 X 3/0	Screen	Force 10
8	Double Hung	6/0 X 4/0	Screen	Force 10

CALCULATIONS

FLOORS

Interiors	1599 Square Feet
Entry Deck	109 Square Feet
Stairs	89 Square Feet
Covered Deck	166 Square Feet
Sun Deck	174 Square Feet
TOTAL	2137 Square Feet per unit
Roof	2219 Square Feet per unit